



2012-2013 Parent Survey

Northwest Independent School District
February 2013

Overview

- Survey respondents included parents, guardians and caregivers of students currently enrolled in Northwest ISD.
- Parents had the opportunity to respond to a series of questions for each school their child(ren) attends and for the overall district.
- Only questions that asked parents to identify the name of their child(ren)'s school(s) were mandatory.
- Survey topics included:
 - School Climate
 - Communications
 - Safe and Orderly Environment
 - Instructional Program
 - Student Support
 - Support Services
 - District Communications

Technical Notes

- The survey was structured to allow parents with multiple children to reflect on each school level in which their children were enrolled (Pre-Kindergarten, Elementary, Middle, High)
- The survey was made available online. Parents received emails and could also access the survey by visiting NISD's website. A provision was made for those with no Internet access to request a paper copy. Two requests were received.
- Most items used a 4-point Likert scale for level of agreement.
- Analysis of longitudinal trends focused on survey items administered in 2007, 2008, 2010 and 2013.
- To enable comparisons with previous years, the "Total Percent Agree" is reported, where the percent of respondents who responded "Strongly Agree" are combined with those who responded "Agree."
- To provide an aggregate result for each topic, the average percent agreement was determined.

Executive Summary of Findings



A number of encouraging findings were identified:

- Across the topic areas surveyed, perceptions are highly favorable and have remained consistent or only slightly less favorable since 2010.
- Parents believe the climate at their child's school is positive, welcoming and safe.
- In general, instructional practices are perceived to be engaging, challenging and relevant.
- Children are excited to go to school and to participate in school activities; if their children have a problem, parents believe they have someone to talk to.
- Schools are believed to be clean and well-maintained.
- Parents feel well-connected to the school and are very satisfied with the district phone calling system.
- Parents are satisfied with communications from their child's school.

Executive Summary of Findings



A few areas emerged as needing attention:

- While the district experiences continued growth, fewer parents who are new to the district are responding to the survey than in previous years.
- Parents who are new to the district are less familiar with how the Central Office supports individual schools.
- Parents expect more constructive feedback on homework, about the academic performance of their child and how they can help their child in school.
- There is a marked decline in satisfaction with food services and transportation services since 2010.

Executive Summary of Findings



The issues listed below require attention and further analysis:

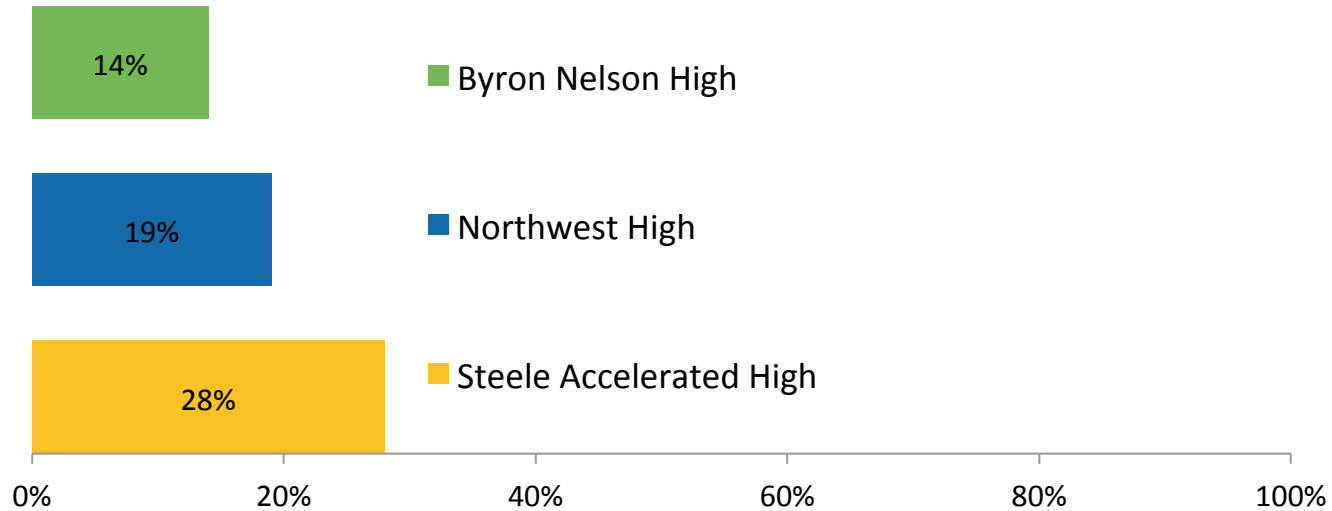
- When there is a need to contact a Central Office administrator, parents often find the process to be lacking and sometimes discourteous.
- Parents do not participate in many of the opportunities available to them at their child's school and district-wide.
- Even though 94% of responding parents indicated their child is safe at school, nearly one-third believe that bullying or threatening behavior is present in their child's school. This is likely the result of ambiguity in the way the question was worded and therefore does not present a cause for concern.

Participation Rate

Year	Number of Responses (n)	Max Possible Responses (Nmax)	Response Rate (%)
2013	2,438	14,536	17%
2010	1,838	9,140	20%
2008	1,087	Unknown	Unknown

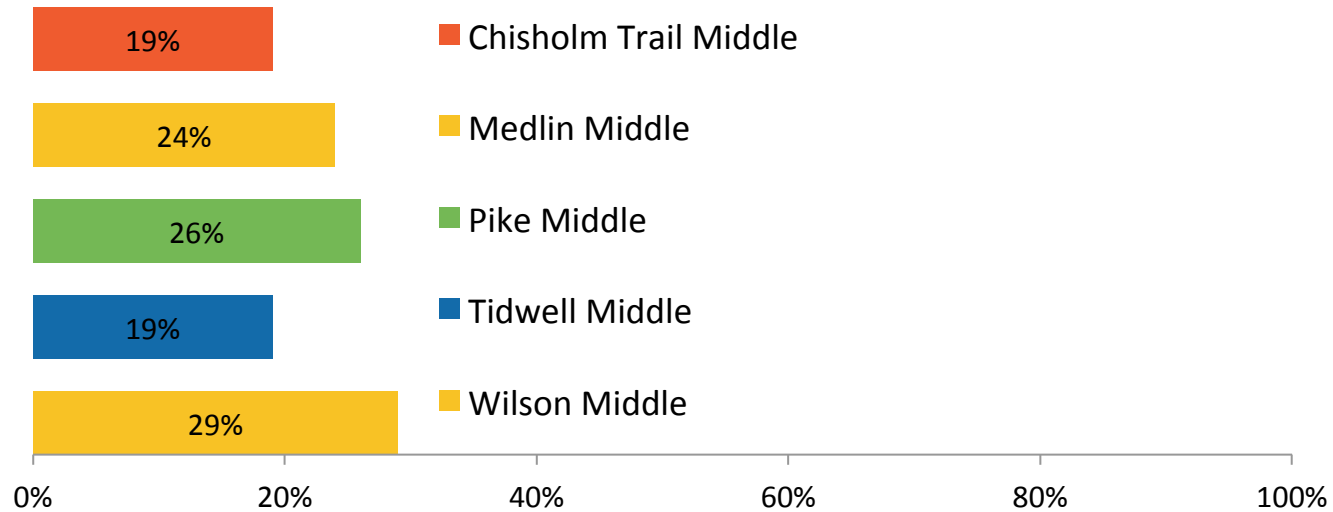
School Type	Number of Responses	Percent of Total Respondents
Pre-Kindergarten	43	2%
Elementary	1,570	64%
Middle	944	39%
High	784	32%

High School Participation Rates



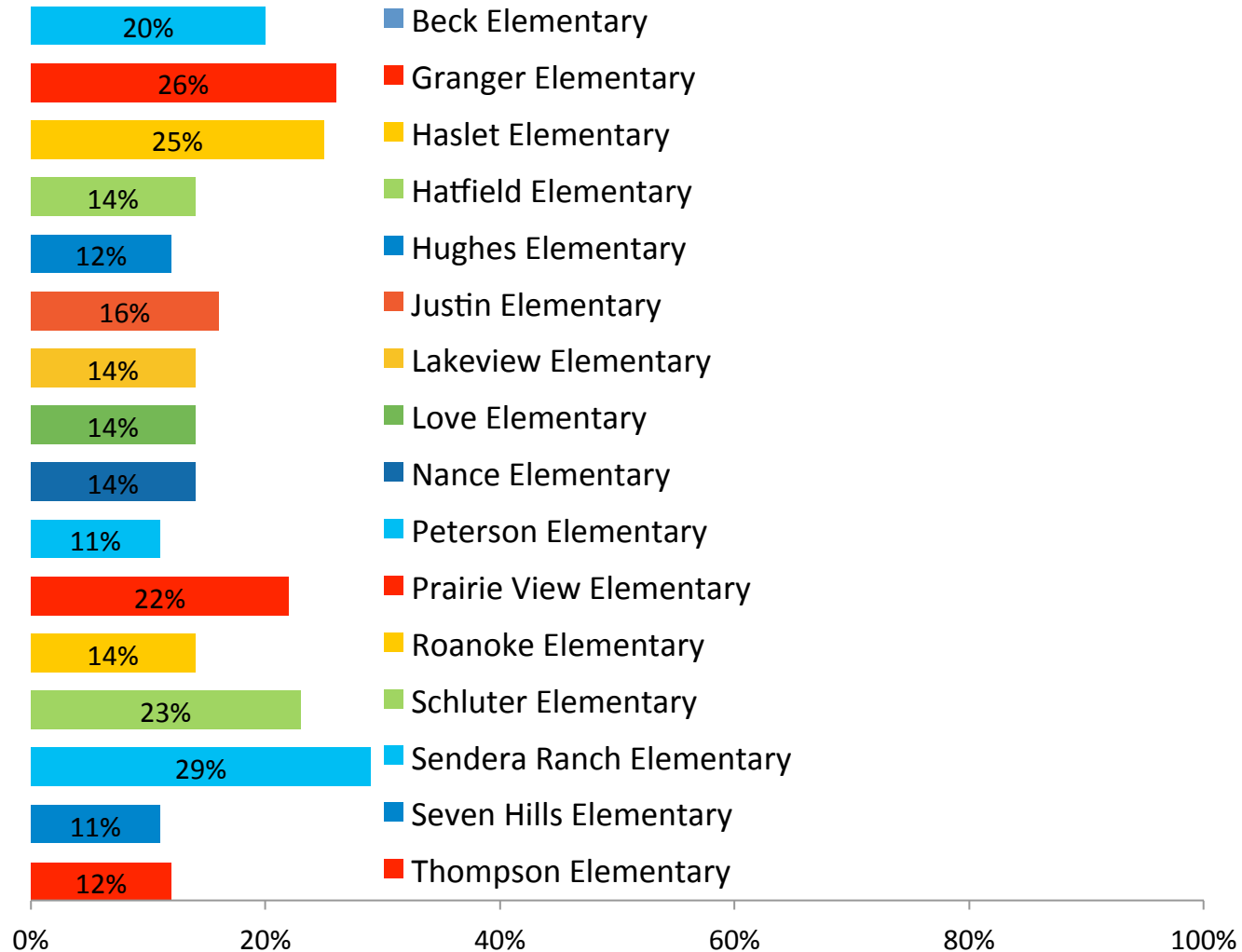
Responses	Maximum Possible Responses	Number of Responses	Response Rate for School
Byron Nelson High	2100	296	14%
Northwest High	2472	466	19%
Steele Accelerated High	78	22	28%

Middle School Participation Rates



Responses	Maximum Possible Responses	Number of Responses	Response Rate for School
Chisholm Trail Middle	876	166	19%
Medlin Middle	910	217	24%
Pike Middle	749	194	26%
Tidwell Middle	905	171	19%
Wilson Middle	678	196	29%

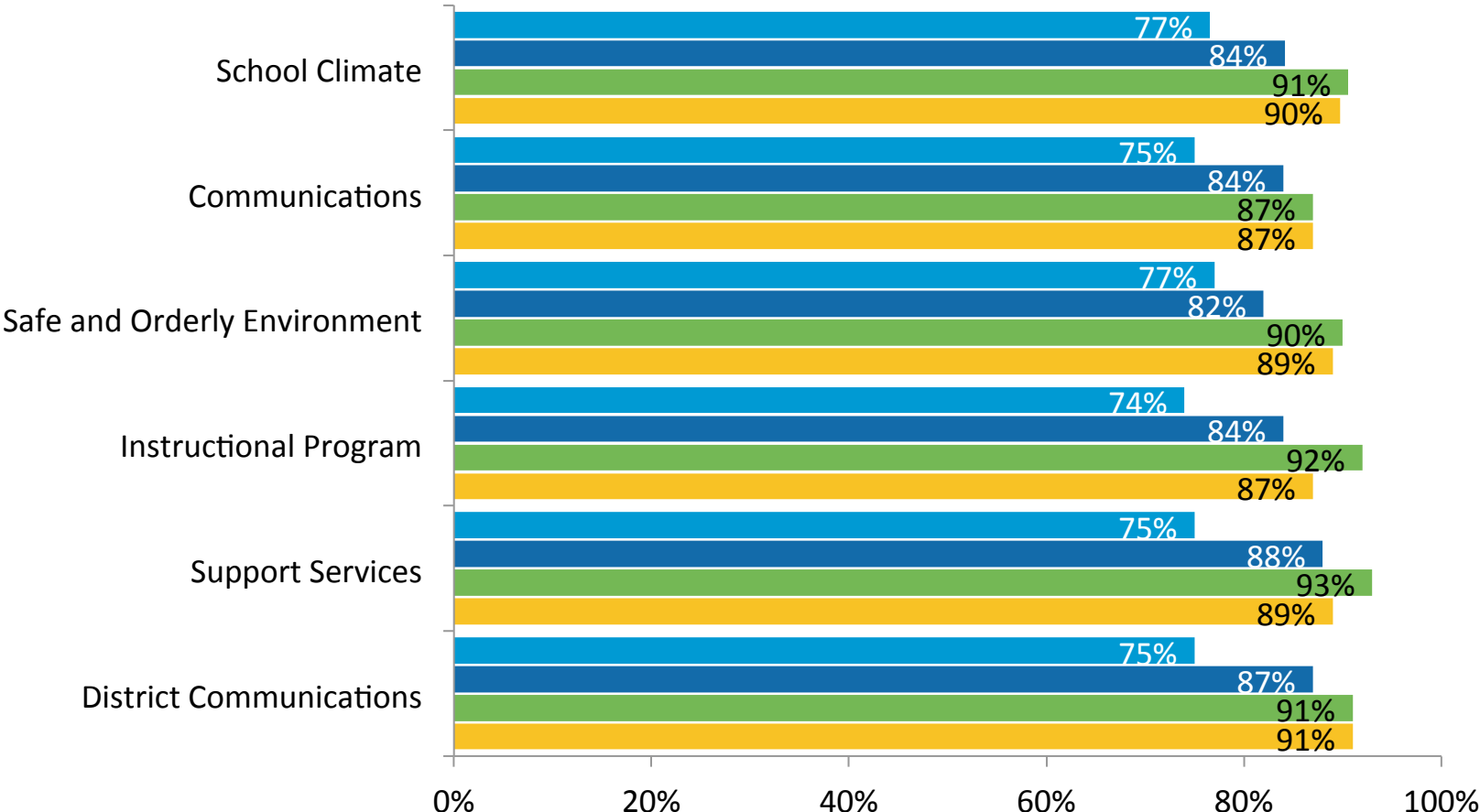
Elementary School Participation Rates



Elementary School Participation Rates

Responses	Maximum Possible Responses	Number of Responses	Response Rate for School
Beck Elementary	709	139	20%
Granger Elementary	879	227	26%
Haslet Elementary	507	128	25%
Hatfield Elementary	447	61	14%
Hughes Elementary	574	67	12%
Justin Elementary	521	85	16%
Lakeview Elementary	509	72	14%
Love Elementary	572	81	14%
Nance Elementary	460	64	14%
Peterson Elementary	628	71	11%
Prairie View Elementary	437	94	22%
Roanoke Elementary	813	113	14%
Schluter Elementary	423	97	23%
Sendera Ranch Elementary	558	161	29%
Seven Hills Elementary	532	56	11%
Thompson Elementary	454	54	12%

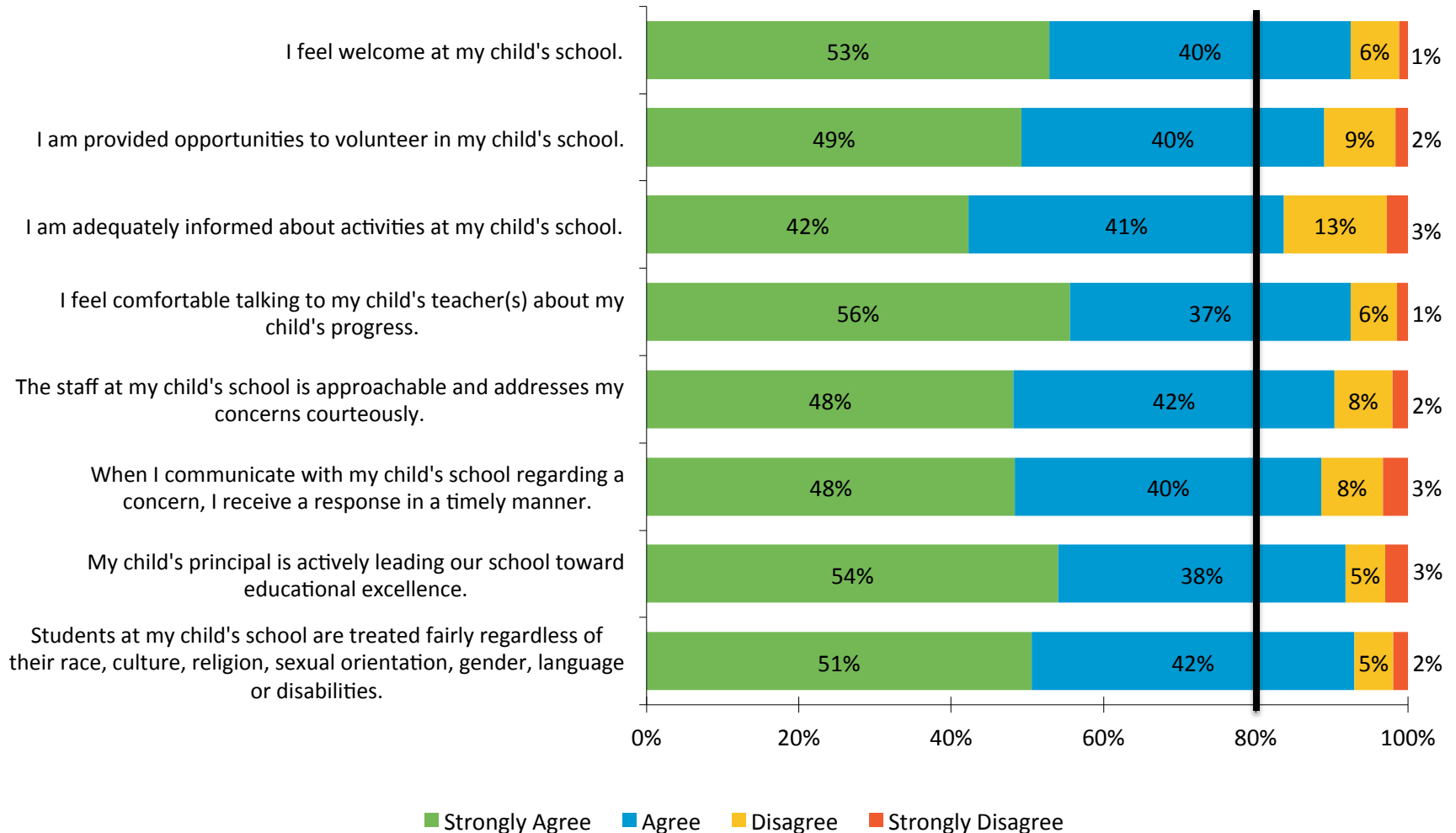
Trends



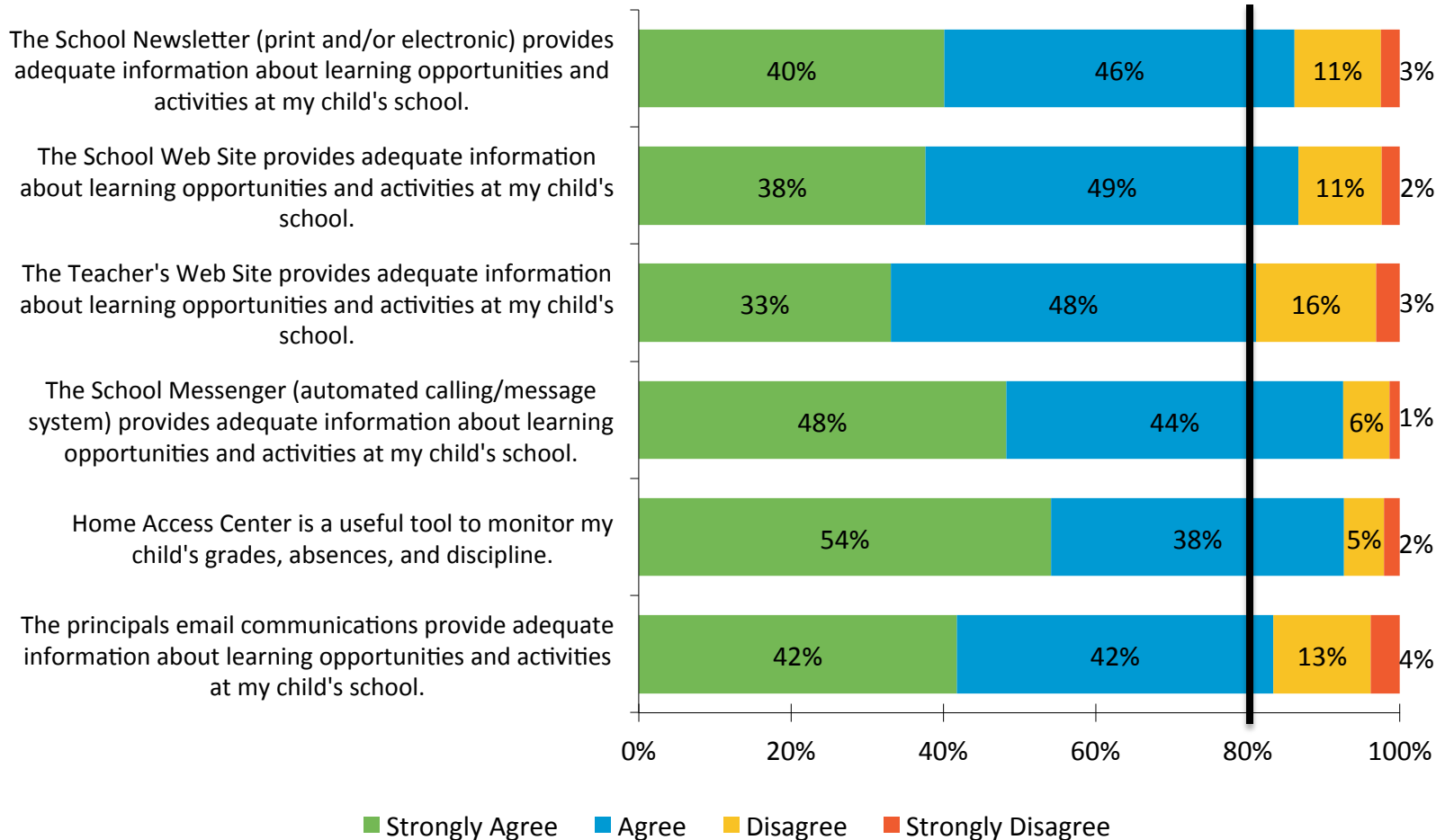
Average of "Strongly Agree" and "Agree"

■ 2007 ■ 2008 ■ 2010 ■ 2013

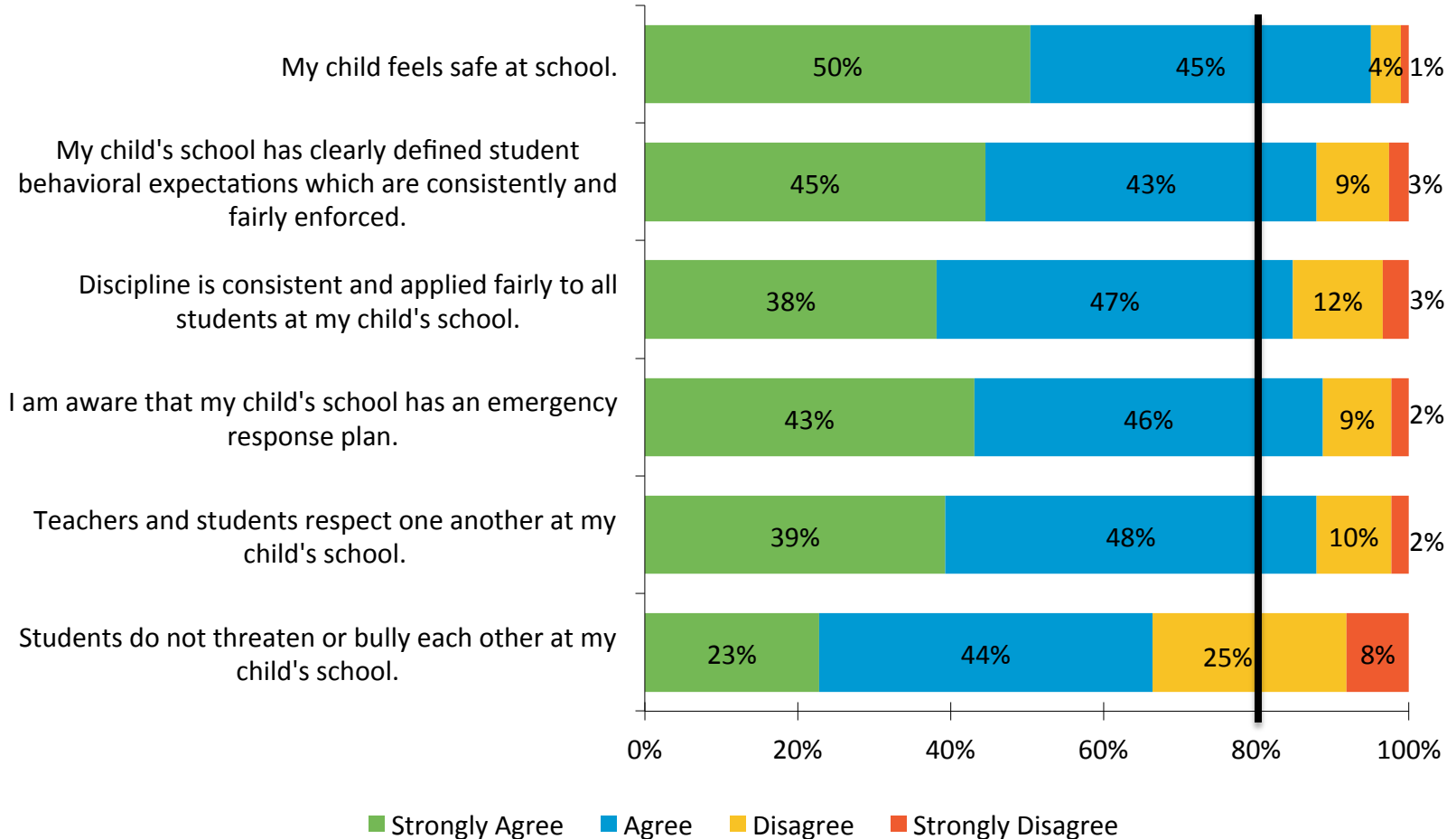
Perceptions of School Climate



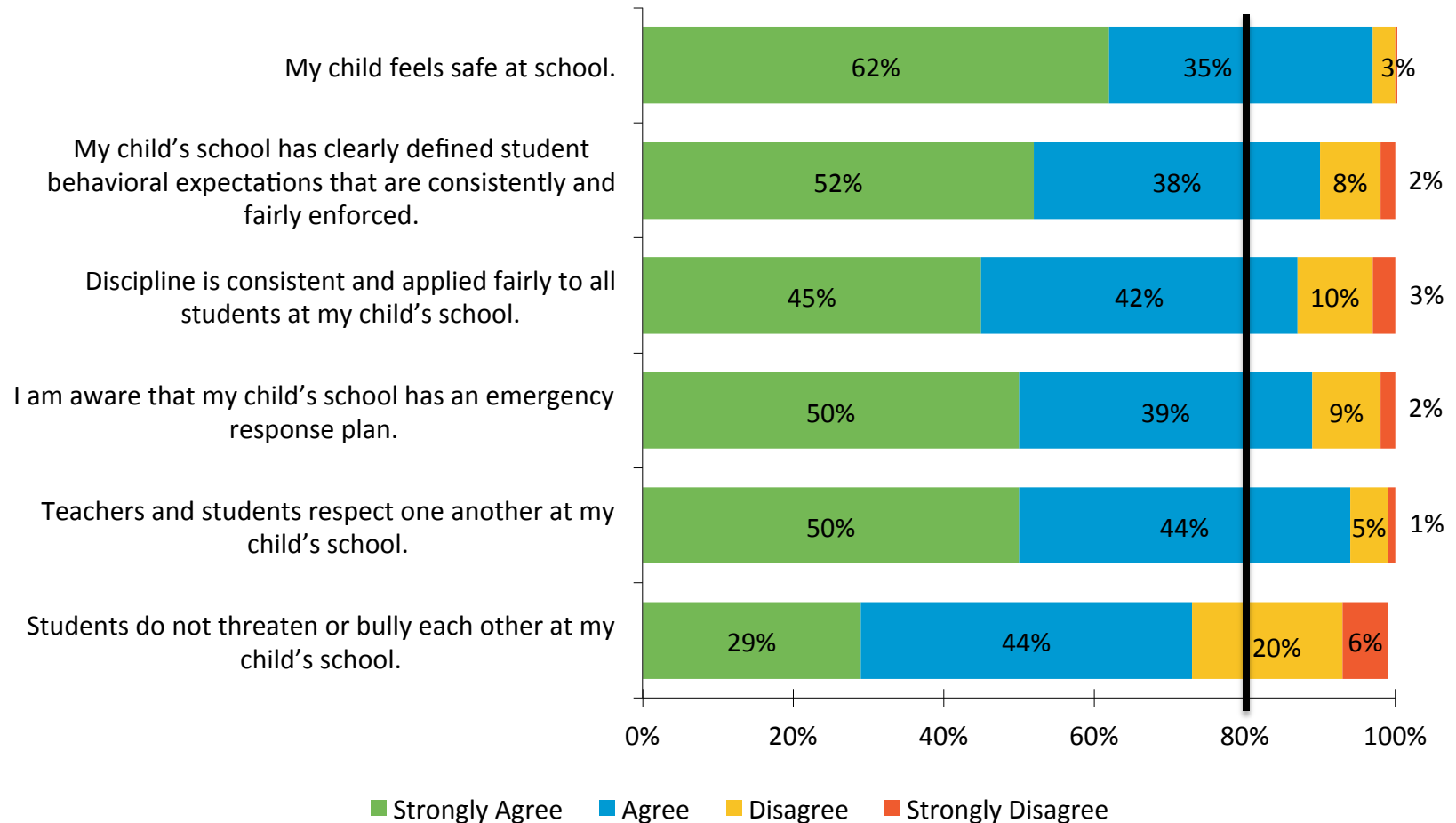
Perceptions of Campus Communications



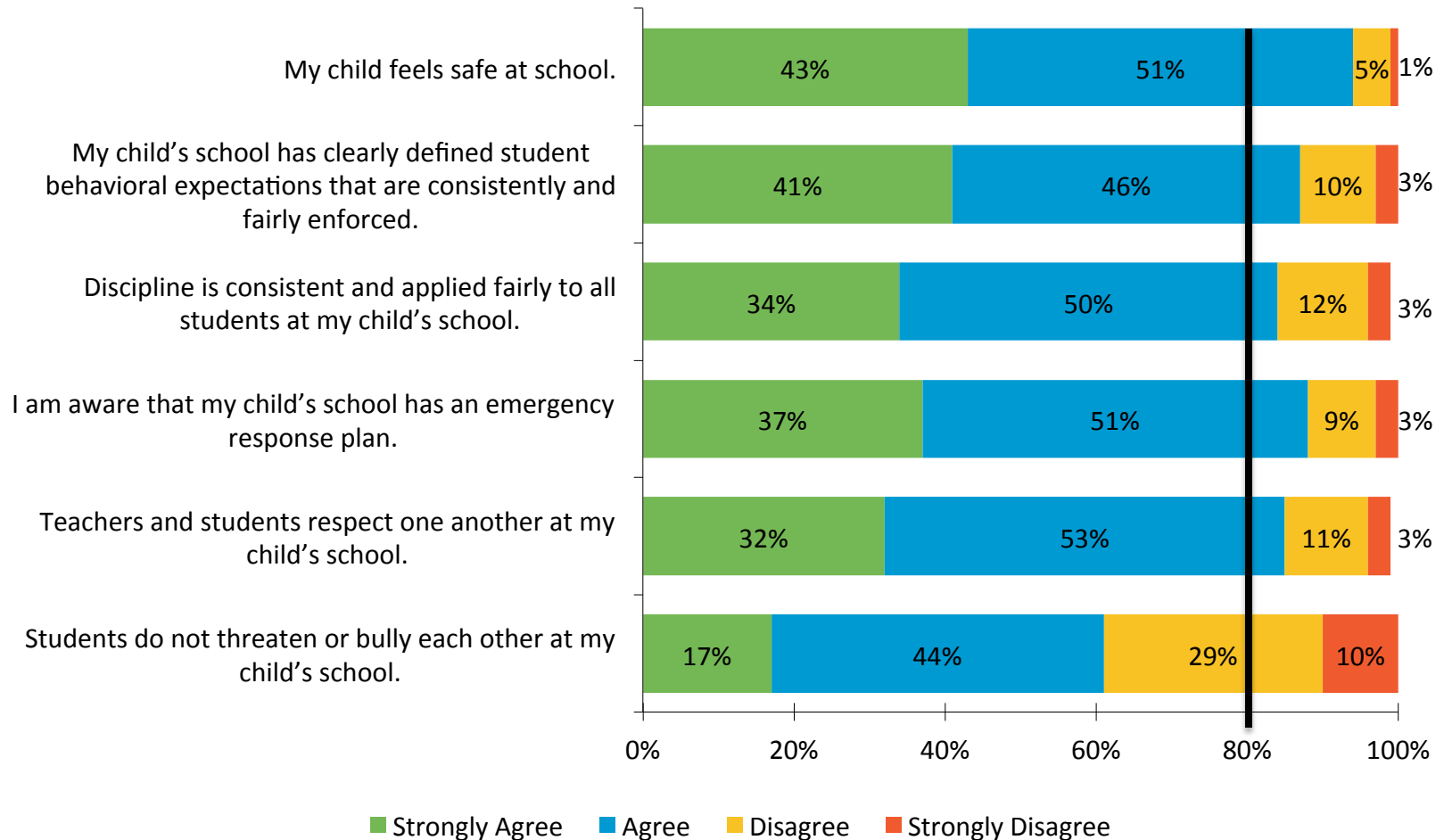
Perceptions of a Safe and Orderly Environment



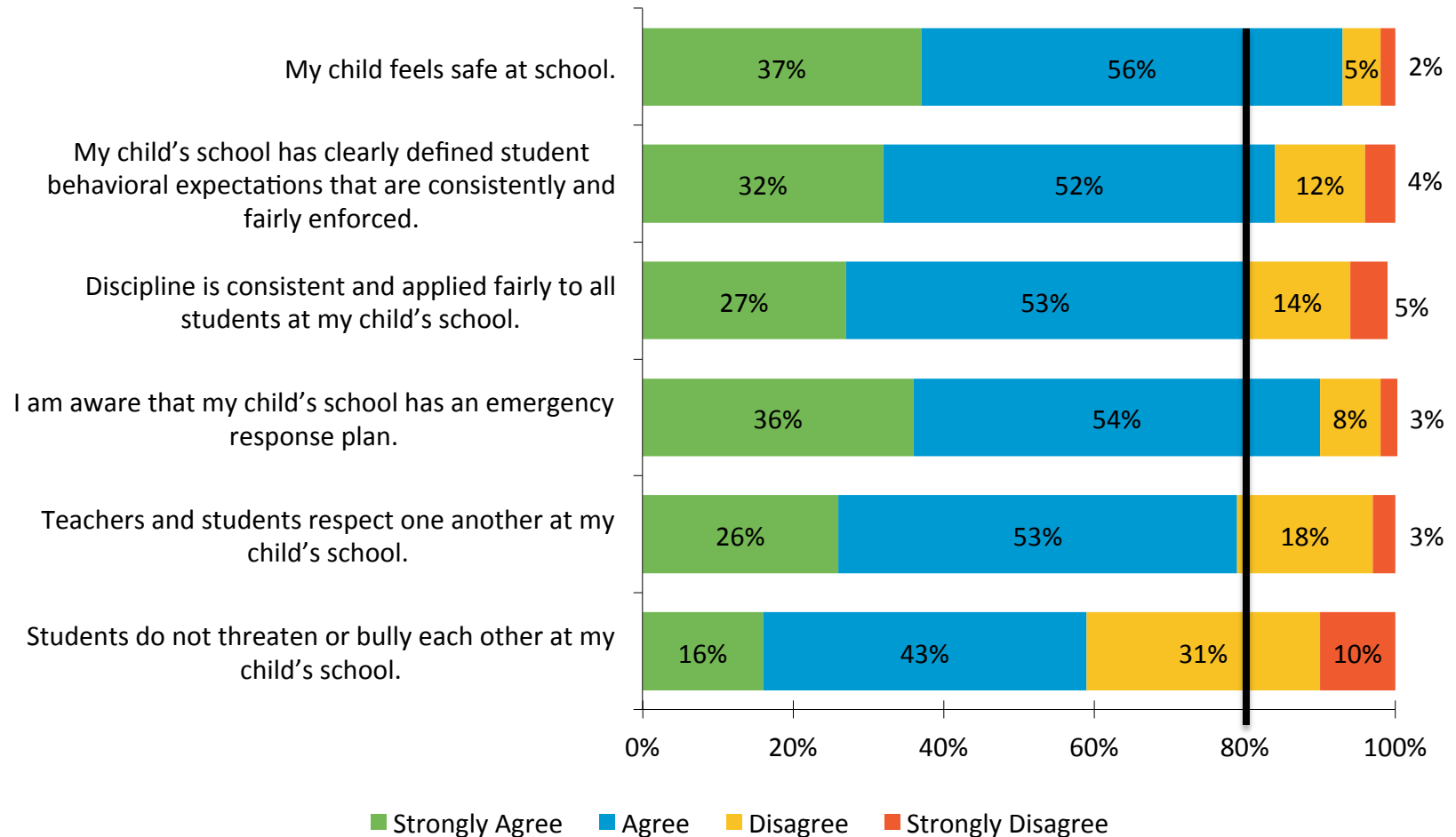
Perceptions of a Safe and Orderly Environment: Elementary School



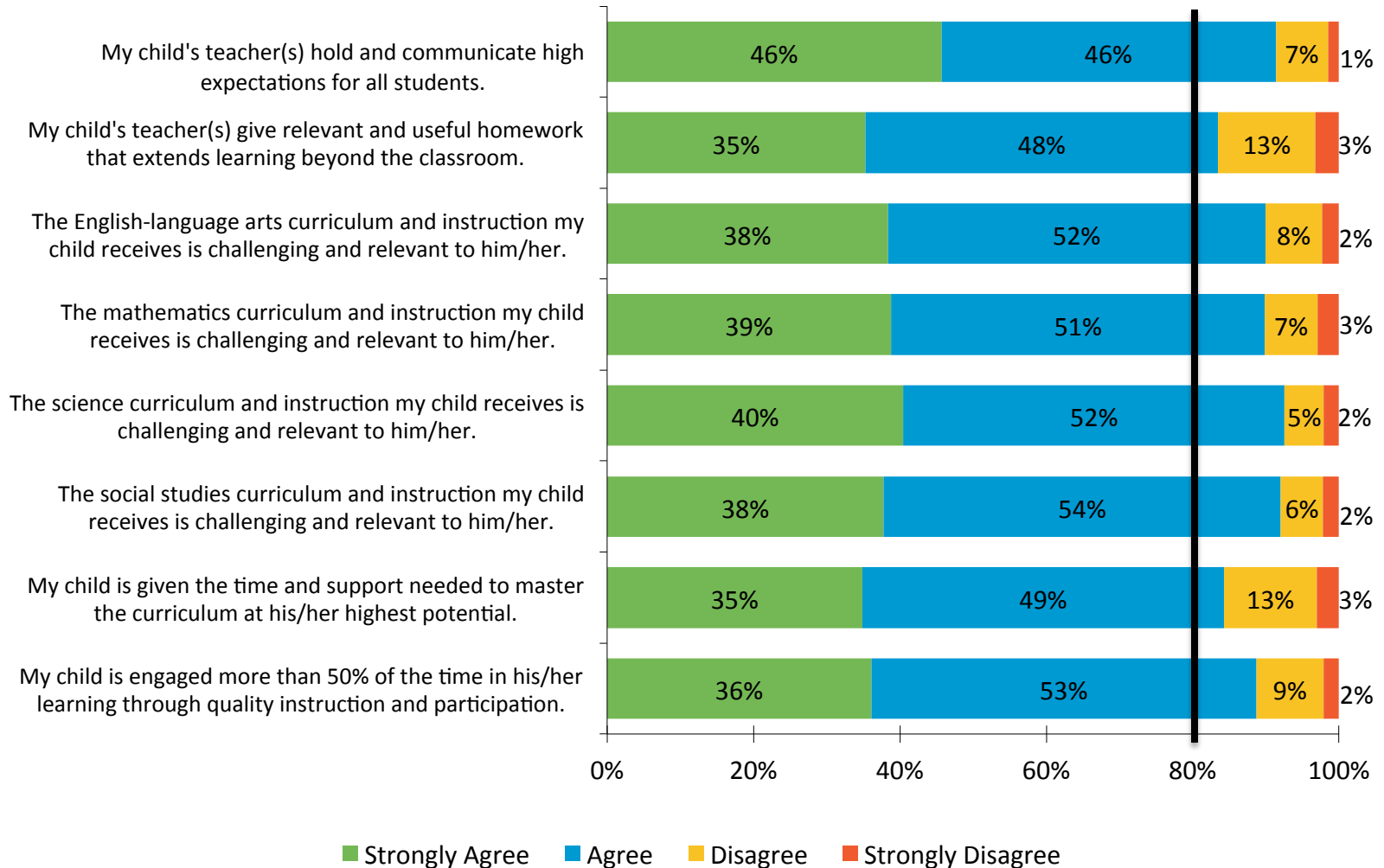
Perceptions of a Safe and Orderly Environment: Middle School



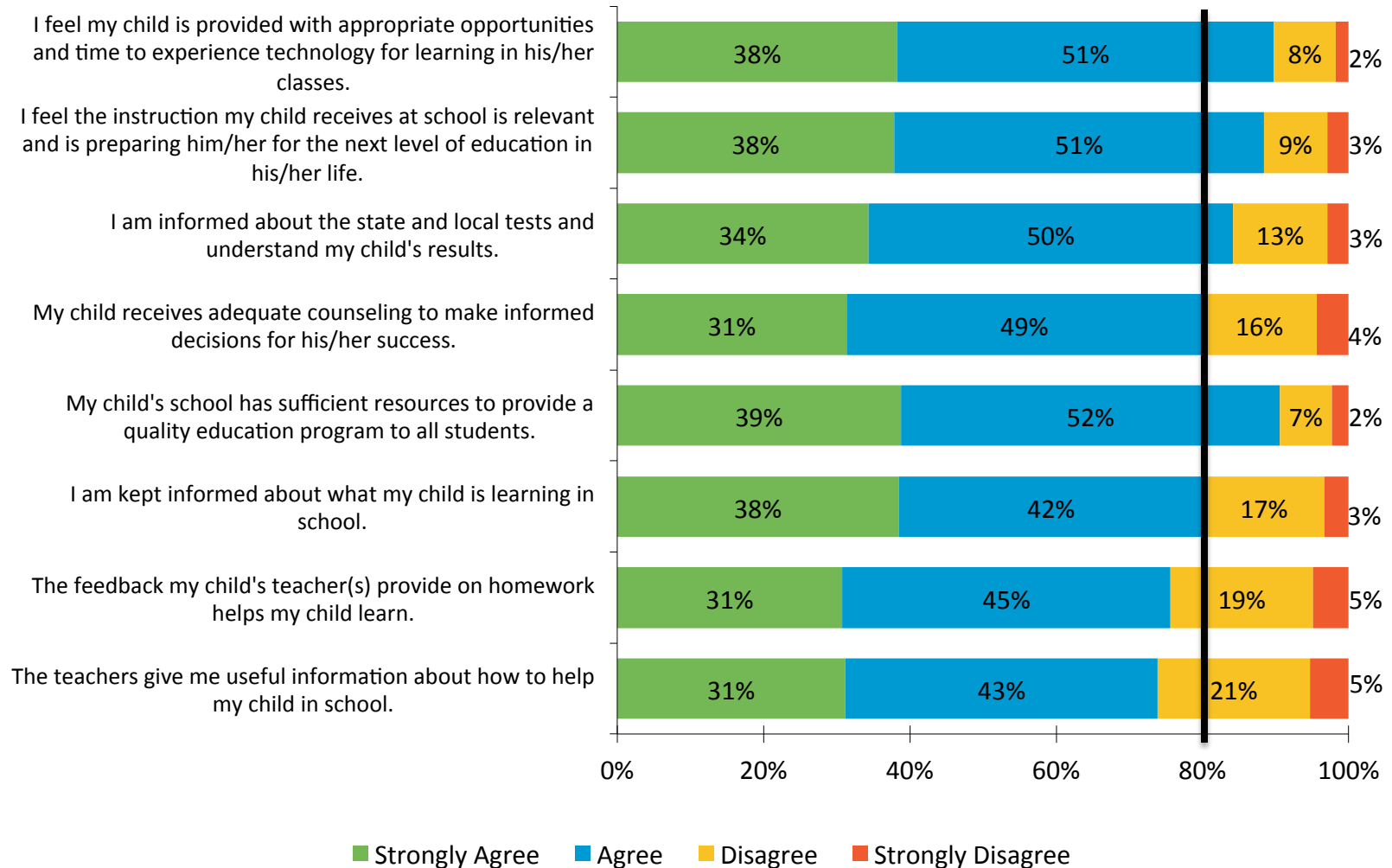
Perceptions of a Safe and Orderly Environment: High School



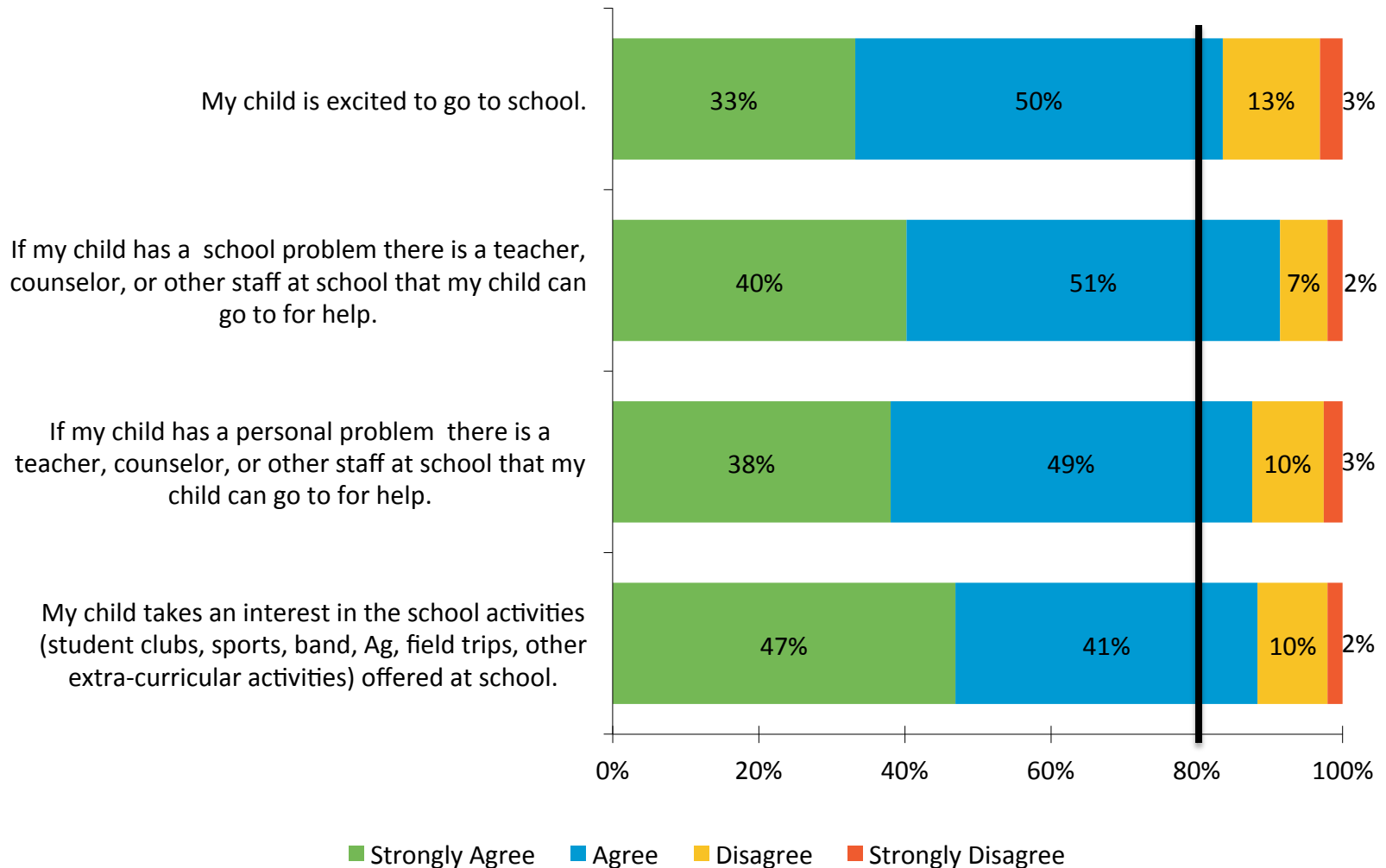
Perceptions of Instructional Practice



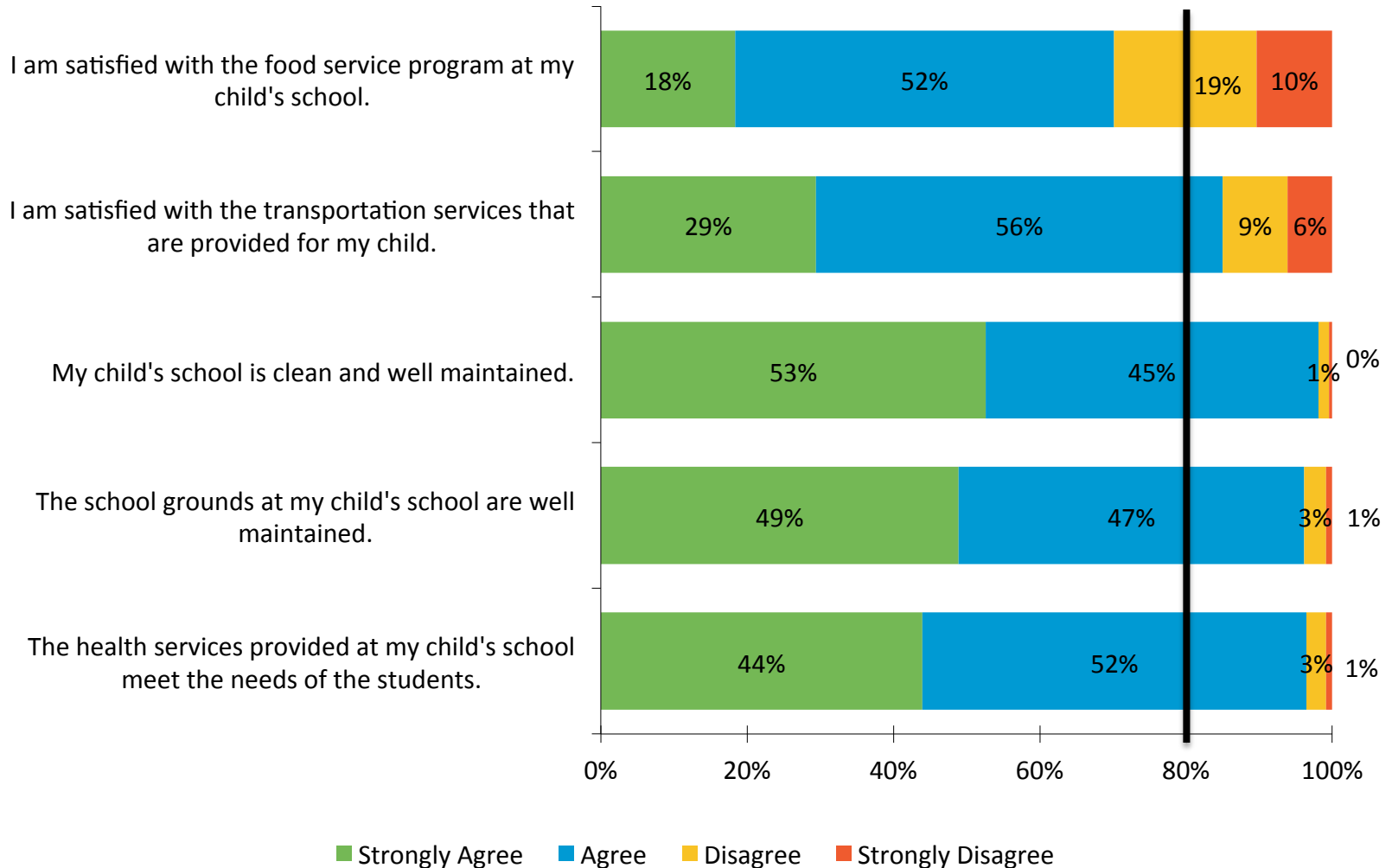
Perceptions of Instructional Practice (cont.)



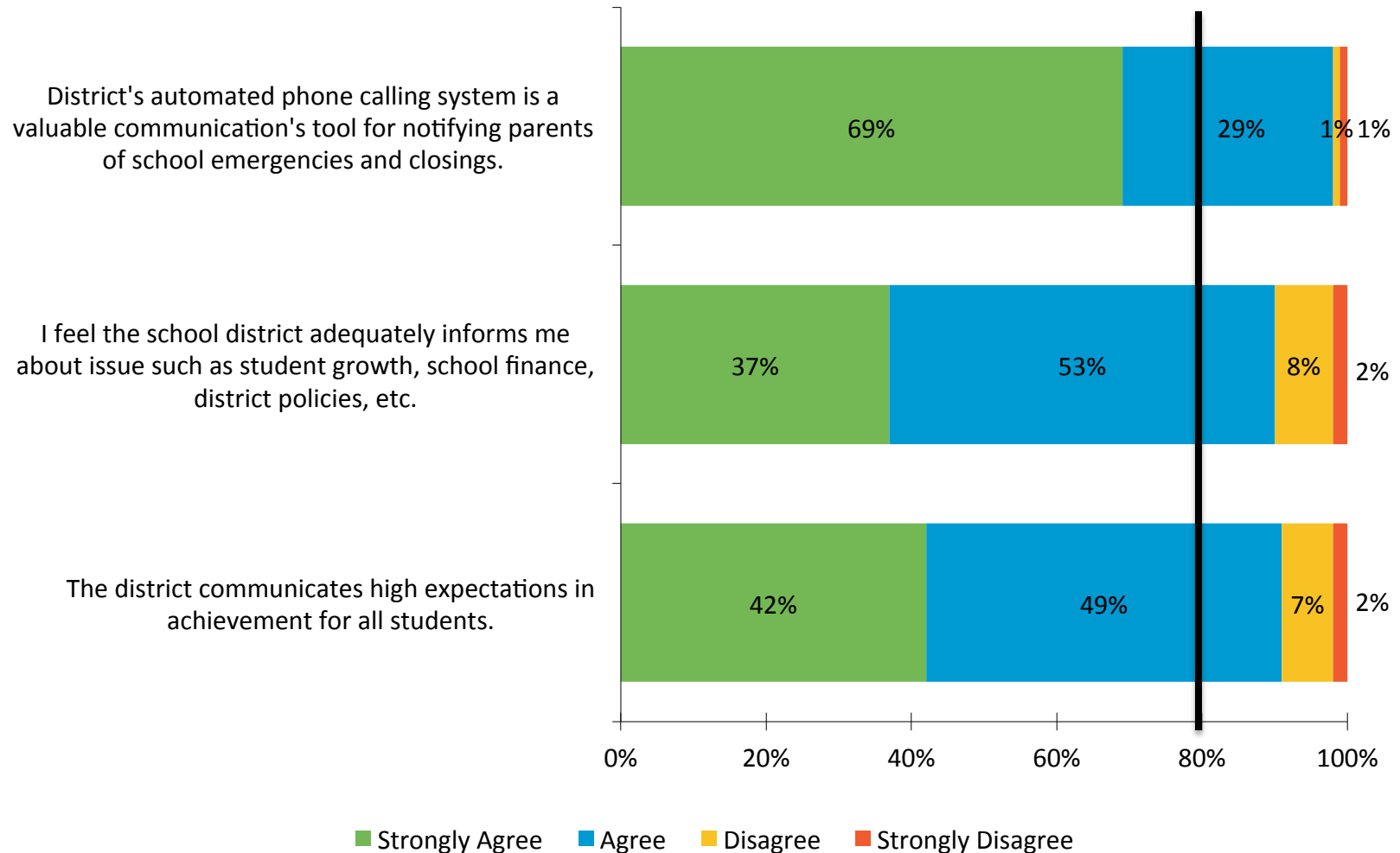
Perceptions of Student Support



Perceptions of Support Services

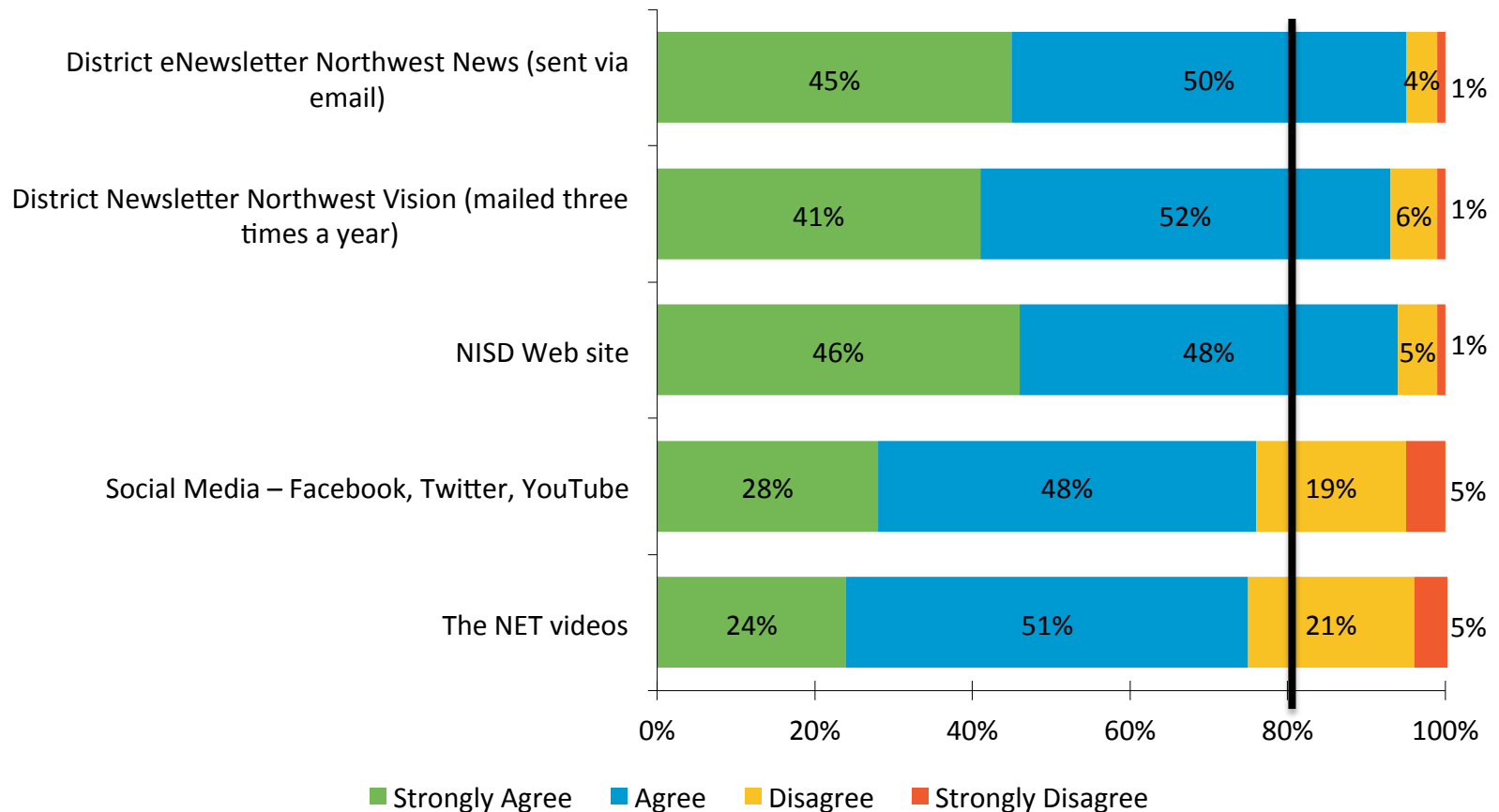


Perceptions of District Communications



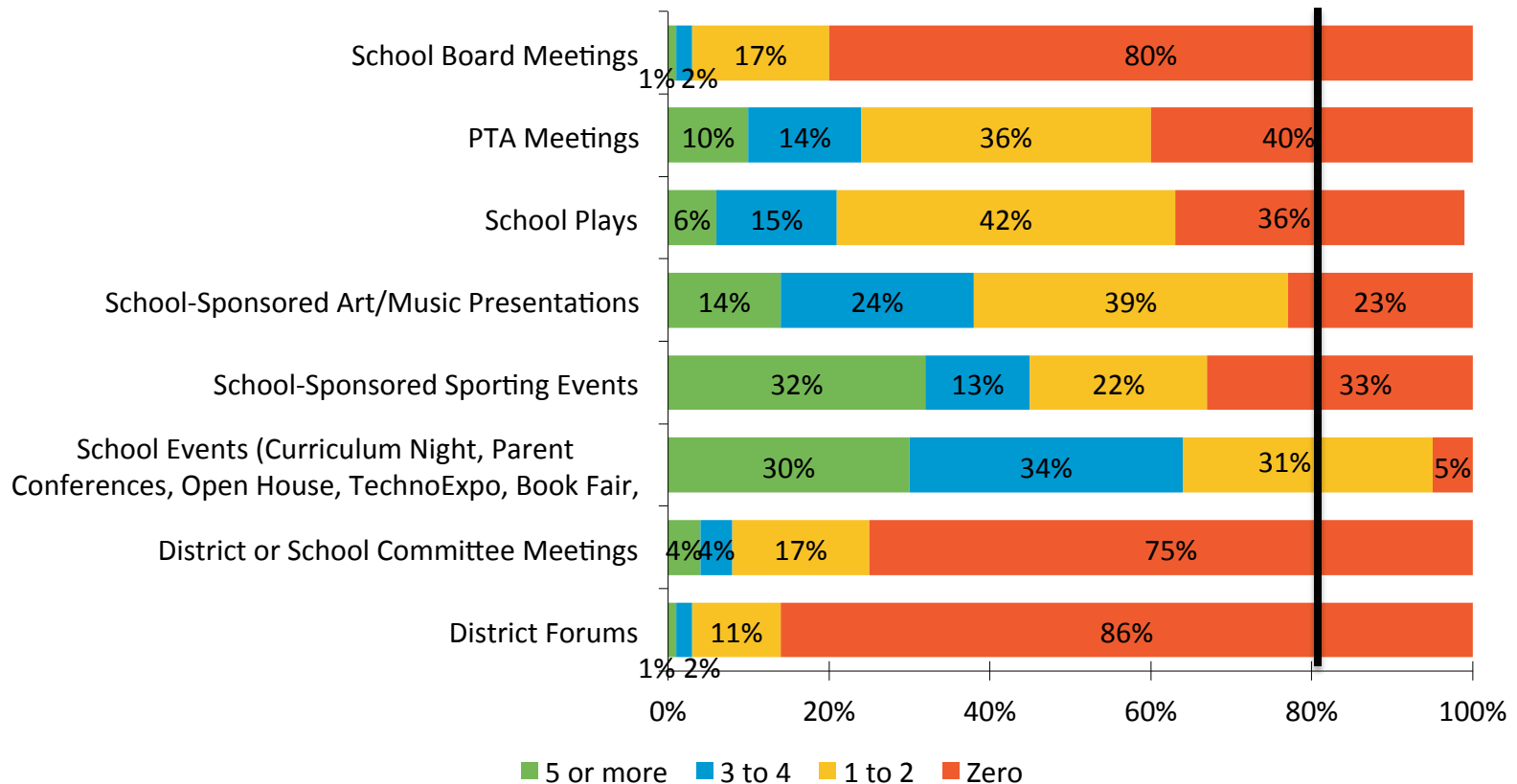
Perceptions of District Communications (cont.)

These communication sources provide adequate information about the school district.



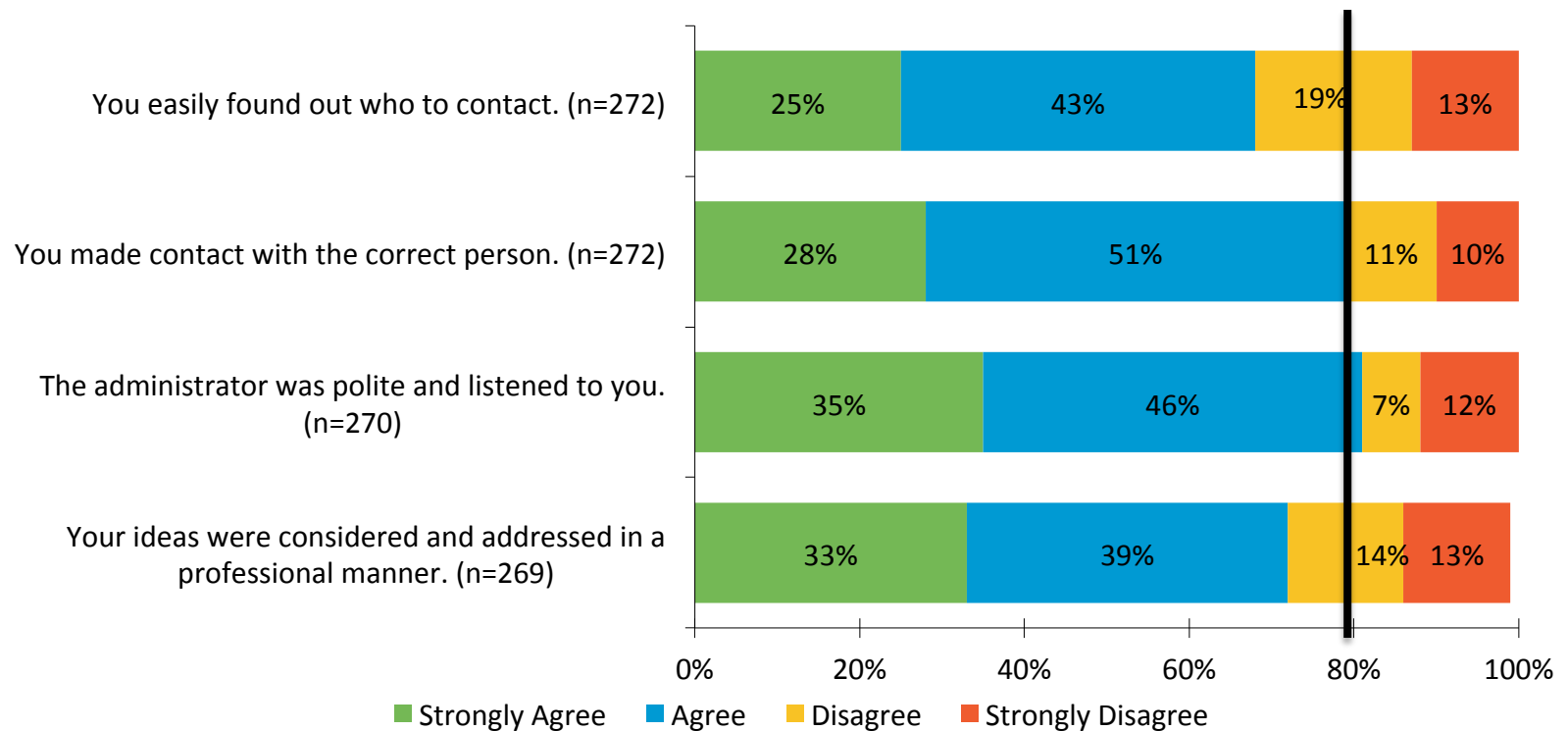
Parent Engagement

Please indicate how often you attended each of the following events during the past year.



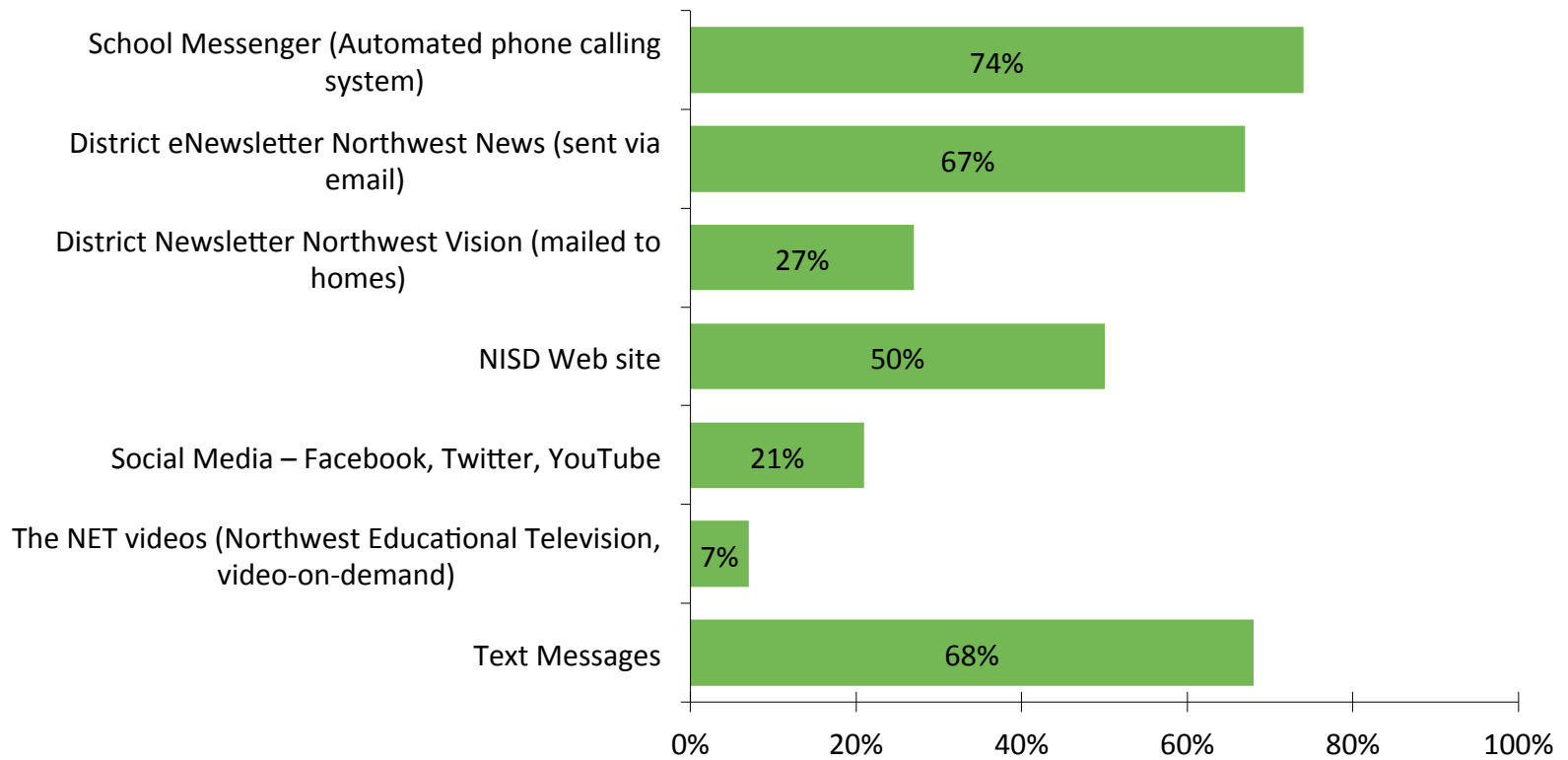
Contact with Central Office

When you have had an issue to discuss or an idea to share with a Central Office administrator . . .



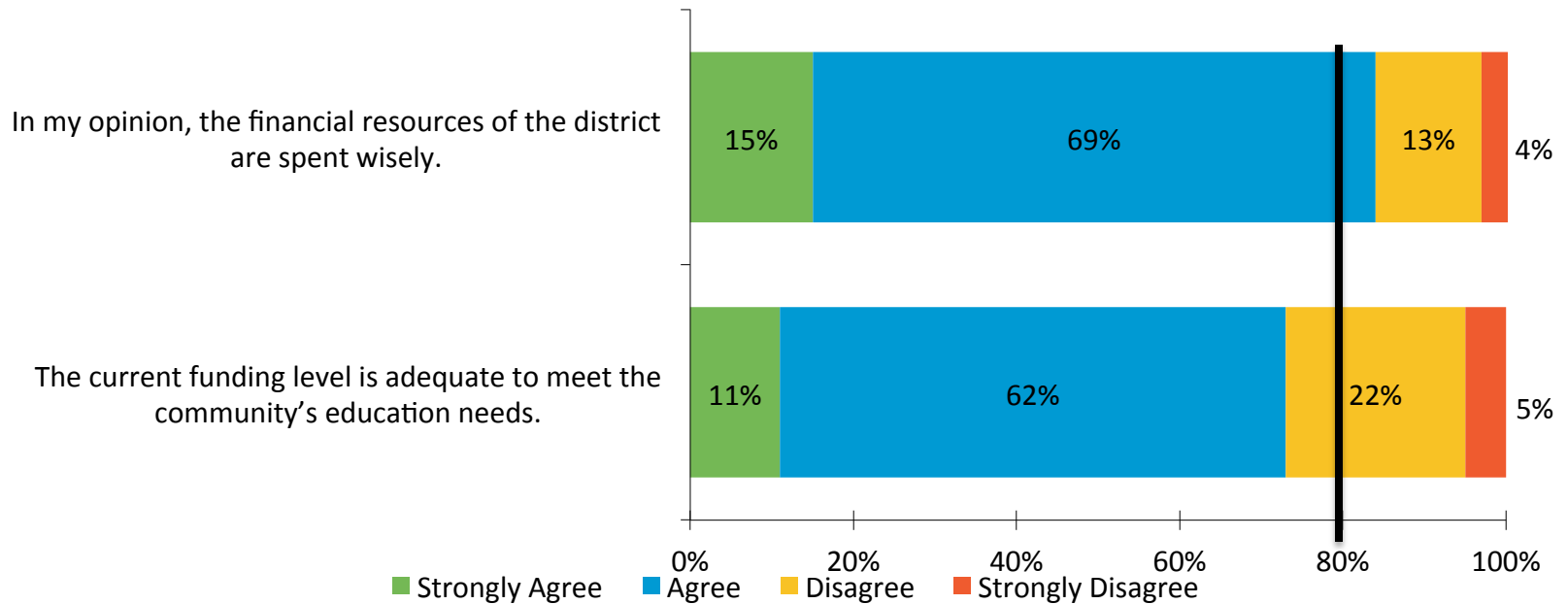
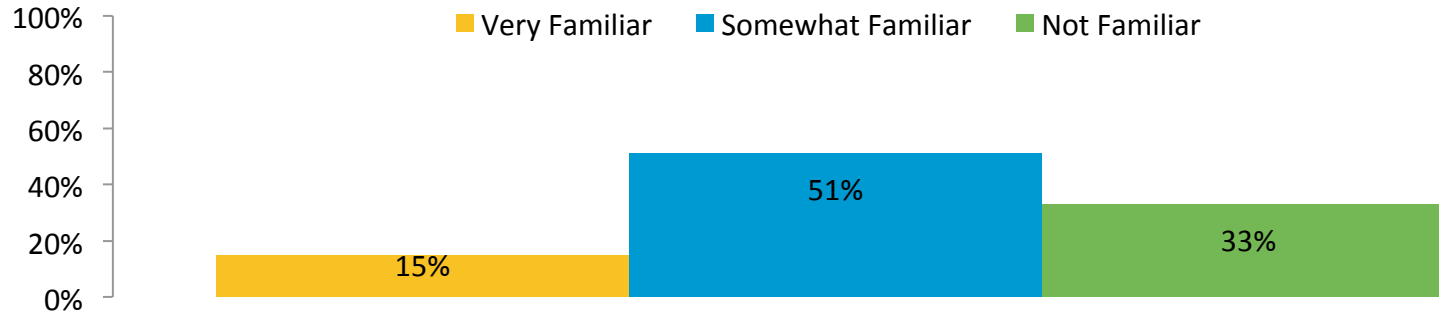
Contact with Central Office (cont.)

How do you prefer to receive information from the school district?

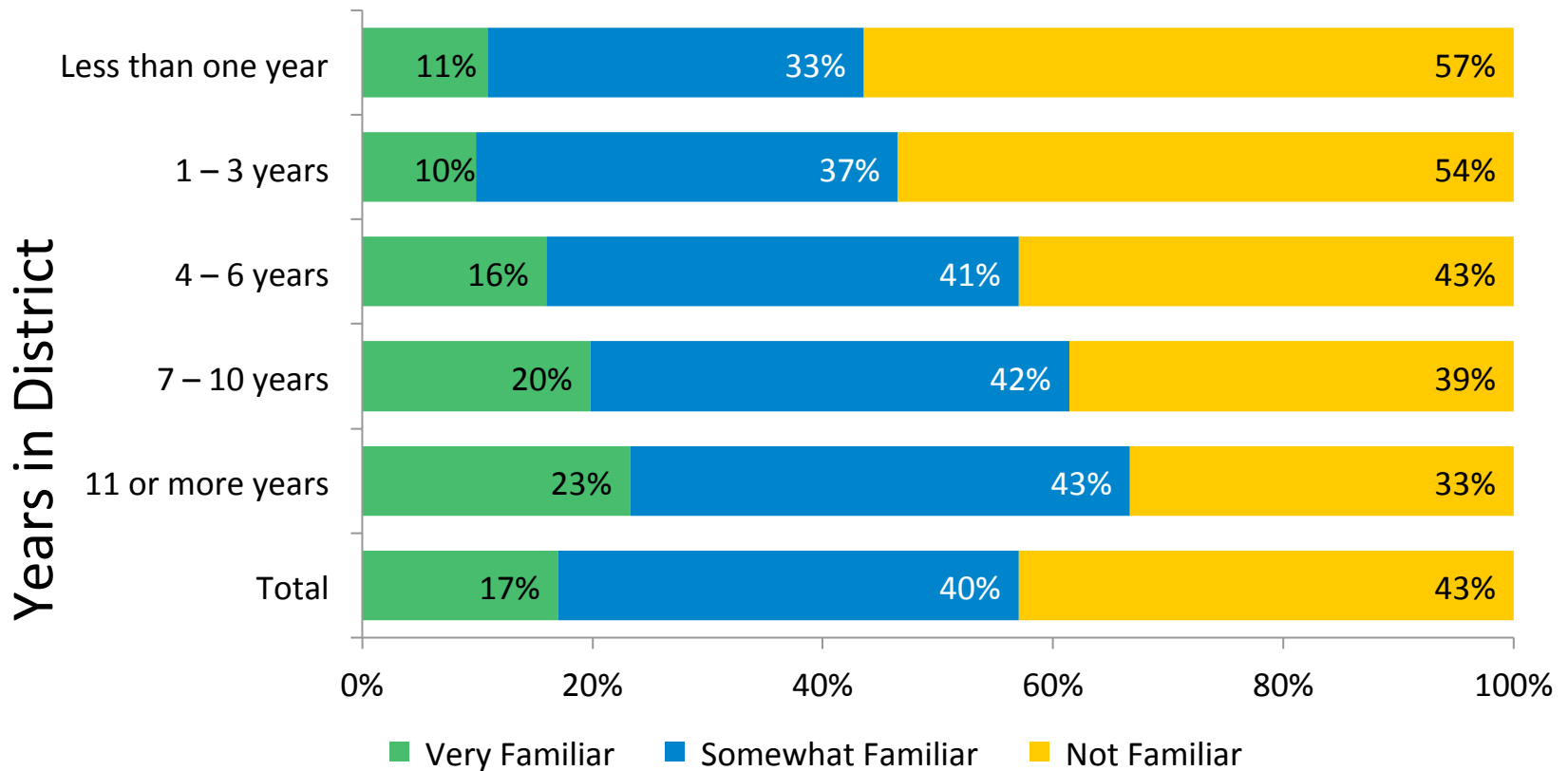


Perceptions of District Finances

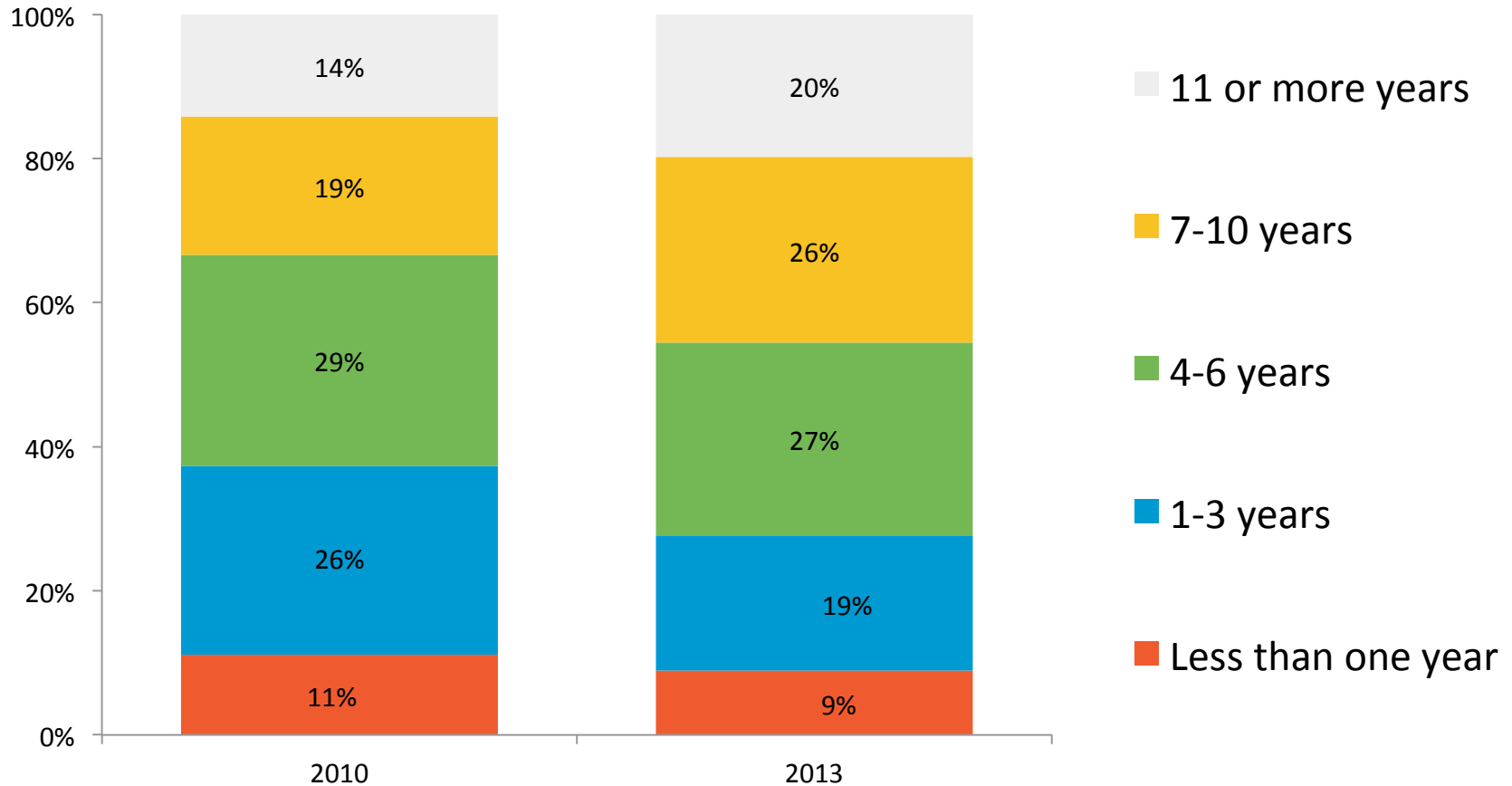
How familiar are you with the District's budget constraints?



How familiar are you with the ways the Central Office supports all schools in your district?

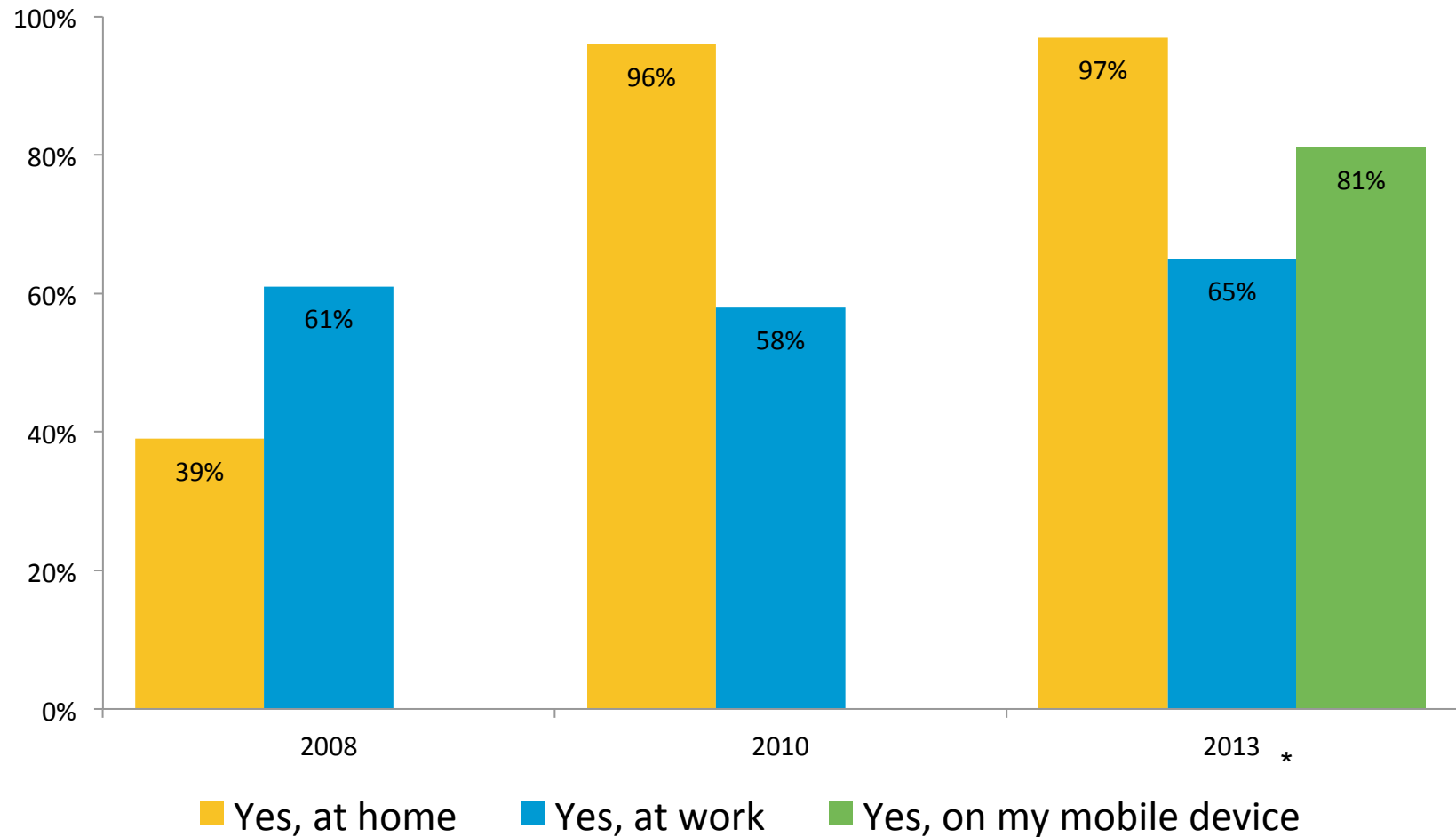


How many years have you lived in Northwest ISD?



Note: Percentage may not equal 100 due to rounding.

Do you have access to the Internet?



*In 2013, six people indicated they did **not** have access to the Internet

Conclusions

Highlights

- Parents perceive that school climate is safe and positive and that their children are engaged in school.
- Student support and associated services are strong.
- Trends over time indicate meaningful improvement since 2007, but appear to have plateaued.
- Communications with parents are adequate, with some room for improvement.

Next Steps

- Better engagement with parents who are new to the district.
- Increase parent engagement through all available opportunities; take advantage of parents' home and mobile internet access.
- Improve the processes and outcomes when parents contact Central Office administration.

Appendix: Item Trends

Item Trends: School Climate

School Climate	2013 Total Agree	Change Since 2010	Change Since 2008	Change Since 2007
I feel welcome at my child's school.	92%	-1%	6%	14%
I am provided opportunities to volunteer in my child's school.	89%	-1%	4%	10%
I am adequately informed about activities at my child's school.	84%	0%	0%	14%
I feel comfortable talking to my child's teacher(s) about my child's progress.	92%	-2%	4%	12%
The staff at my child's school is approachable and addresses my concerns courteously.	90%	-2%	4%	13%
When I communicate with my child's school regarding a concern, I receive a response in a timely manner.	89%	0%	4%	13%
My child's principal is actively leading our school toward educational excellence.	92%	0%	17%	16%
Students at my child's school are treated fairly regardless of their race, culture, religion, sexual orientation, gender, language or disabilities.	93%	N/A	N/A	N/A

Item Trends: Campus Communication

Communication	2013 Total Agree	Change Since 2010	Change Since 2008	Change Since 2007
The school newsletter (print and/or electronic) provides adequate information about learning opportunities and activities at my child's school.	86%	0%	5%	15%
The school website provides adequate information about learning opportunities and activities at my child's school.	87%	0%	11%	15%
The teacher website provides adequate information about learning opportunities and activities at my child's school.	81%	-3%	-11%	12%
The School Messenger (automated calling/message system) provides adequate information about learning opportunities and activities at my child's school.	93%	4%	4%	N/A
Home Access Center is a useful tool to monitor my child's grades, absences, and discipline.	93%	2%	8%	7%
The principal's email communications provide adequate information about learning opportunities and activities at my child's school.	83%	N/A	N/A	N/A

Item Trends: Safe and Orderly Environment

Safe and Orderly Environment	2013 Total Agree	Change Since 2010	Change Since 2008	Change Since 2007
My child feels safe at school.	95%	0%	13%	12%
My child's school has clearly defined student behavioral expectations which are consistently and fairly enforced.	88%	-1%	9%	11%
Discipline is consistent and applied fairly to all students at my child's school.	85%	-1%	1%	13%
I am aware that my child's school has an emergency response plan.	89%	-1%	8%	13%
Teachers and students respect one another at my child's school.	88%	N/A	N/A	N/A
Students do not threaten or bully each other at my child's school.	66%	N/A	N/A	N/A

Item Trends: Instructional Program

Instructional Program	2013 Total Agree	Change Since 2010	Change Since 2008	Change Since 2007
My child's teacher(s) hold and communicate high expectations for all students.	91%	-3%	2%	14%
My child's teacher(s) give relevant and useful homework that extends learning beyond the classroom.	83%	-7%	6%	11%
The English-language arts curriculum and instruction my child receives is challenging and relevant to him/her.	90%	-3%	3%	N/A
The mathematics curriculum and instruction my child receives is challenging and relevant to him/her.	90%	-3%	-1%	13%
The science curriculum and instruction my child receives is challenging and relevant to him/her.	93%	-2%	2%	16%
The social studies curriculum and instruction my child receives is challenging and relevant to him/her.	92%	-3%	1%	N/A
My child is given the time and support needed to master the curriculum at his/her highest potential.	84%	-9%	5%	11%

Item Trends: Instructional Program (cont.)

Instructional Program	2013 Total Agree	Change Since 2010	Change Since 2008	Change Since 2007
My child is engaged more than 50% of the time in his/her learning through quality instruction and participation.	89%	0%	1%	N/A
I feel my child is provided with appropriate opportunities and time to experience technology for learning in his/her classes.	90%	-1%	8%	N/A
I feel the instruction my child receives at school is relevant and is preparing him/her for the next level of education in his/her life.	88%	-3%	2%	12%
I am informed about the state and local tests and understand my child's results.	84%	-6%	-4%	6%
My child receives adequate counseling to make informed decisions for his/her success.	80%	-6%	7%	15%
My child's school has sufficient resources to provide a quality education program to all students.	91%	-3%	5%	17%
I am kept informed about what my child is learning in school.	80%	N/A	N/A	N/A
The feedback my child's teacher(s) provide on homework helps my child learn.	76%	N/A	N/A	N/A
The teachers give me useful information about how to help my child in school.	74%	N/A	N/A	N/A

Item Trends: Support Services

Support Services	2013 Total Agree	Change Since 2010	Change Since 2008	Change Since 2007
I am satisfied with the food service program at my child's school.	70%	-6%	-6%	2%
I am satisfied with the transportation services that are provided for my child.	85%	-7%	2%	14%
My child's school is clean and well maintained.	98%	-1%	4%	13%
The school grounds at my child's school are well maintained.	96%	-2%	5%	16%
The health services provided at my child's school meet the needs of the students.	96%	-3%	2%	25%

Item Trends: District Communications

District Communications	2013 Total Agree	Change Since 2010	Change Since 2008	Change Since 2007
The District's automated phone calling system is a valuable communication tool for notifying parents of school emergencies and closings.	98%	1%	2%	8%
I feel the school district adequately informs me about issues such as student growth, school finance, district policies, etc.	90%	3%	11%	20%
In my opinion, the financial resources of the district are spent wisely.	84%	-2%	1%	18%
The district communicates high expectations in achievement for all students.	91%	-2%	0%	16%

Item Trends: District Information

District Information	2013 Total Agree	Change Since 2010	Change Since 2008	Change Since 2007
The District's automated phone calling system is a valuable communication tool for notifying parents of school emergencies and closings.	98%	1%	2%	8%
I feel the school district adequately informs me about issues such as student growth, school finance, district policies, etc.	90%	3%	11%	20%
In my opinion, the financial resources of the district are spent wisely.	84%	-2%	1%	18%
The district communicates high expectations in achievement for all students.	91%	-2%	0%	16%
The current funding level is adequate to meet the community's education needs.	73%	N/A	N/A	N/A

Items: Student Support

Student Support	2013 Total Agree
My child is excited to go to school.	84%
If my child has a school problem there is a teacher, counselor, or other staff member at school who my child can go to for help.	91%
If my child has a personal problem there is a teacher, counselor, or other staff member at school who my child can go to for help.	88%
My child takes an interest in the school activities (student clubs, sports, band, Ag, field trips, other extra-curricular activities) offered at school.	88%